

VOICE COIL

THE PERIODICAL FOR THE LOUDSPEAKER INDUSTRY

IN THIS ISSUE

1 INDUSTRY NEW & DEVELOPMENTS

By Vance Dickason

8 SPOTLIGHT

Electroacoustic Measurements of Headphones

By Christopher J. Struck

13 DIRECTORY

Adhesives, Coatings, Sealant, and Dispenser Providers

By Nora Wong

18 SPOTLIGHT

Loudspeakers for Vented Enclosures

A Backward Approach for Speaker Selection (LoVE BASS)

By Francisco Castells and José Manuel Requena

22 TEST BENCH

Faital Pro's New 6RS140 and TB Speaker's W8-2314

By Vance Dickason

36 INDUSTRY WATCH

By Vance Dickason



Industry News & Developments

By Vance Dickason

Klippel Controlled Sound (KCS)

Loudspeakers are highly nonlinear and time-variant systems. Signal distortion, heating, aging, climate, and other external influences limit the maximum level and the quality of the reproduced sound. Klippel Controlled Sound (KCS) represents a new paradigm in active loudspeaker control and correction (see **Figure 1**). The adaptive nonlinear control system, KCS, can cope with these undesired effects and generate the desired linear behavior over the entire working range.

Moreover KCS provides:

- More sound pressure output
- Active protection against overload
- Cancellation of nonlinear distortion
- Desired linear target performance
- Copes with aging, climate, and production variance
- Lowers cost, weight, and size

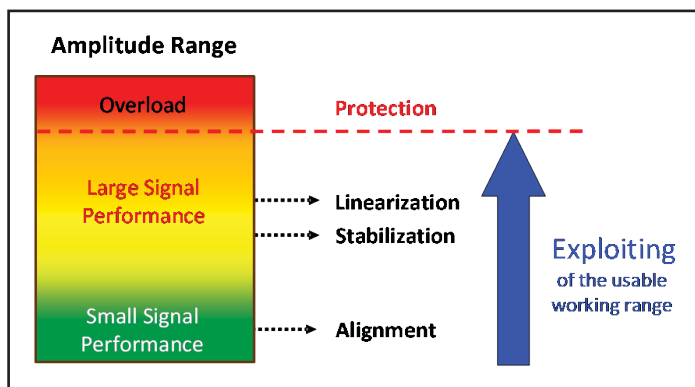


Figure 1: Graphic representation of the KCS operating features over the dynamic range of a transducer

Loudspeakers for Vented Enclosures

A Backward Approach for Speaker Selection (LoVE BASS)

By Francisco Castells and José Manuel Requena (Universitat Politècnica de València, Valencia, Spain)

In this article, the problem of designing vented enclosures is revisited, with a backward concept: from the box to the driver as opposed to taking a given driver and designing an enclosure. The classical procedure starts by choosing a supposedly appropriate driver for the target enclosure. No specific recommendations are available for transducer selection, apart from designer’s expertise, which leads to a trial-and-error approach until a convenient transducer is found.

In contrast to this methodology, the backward approach starts by defining the system’s target performance, which can be defined in terms of physical volume V_B (the smaller the better), lower cut-off frequency f_3 (the lower, the better), ripple (the lower, the better), and maximum achievable SPL (the higher, the better). Having defined these target parameters (if feasible), the focus is put on finding candidate drivers that allow for such a design.

LoVE BASS has been developed to carry out this job in a quick and efficient manner, so that a substantial amount of engineering hours can be saved during the process of speaker box design.

LoVE BASS: An Open Tool for Speaker Selection

LoVE BASS is a tool developed for use in Matlab for the generation of vented enclosure woofer parameters. Given the target performance of the desired enclosure, two different approaches are considered. One approach searches for suitable drivers within a database. The other aims at defining the goal parameters to manufacture a custom driver. Either one approach or the other will be carried out by selecting its corresponding menu tab.

Selection of Suitable Drivers from Database

When running LoVE BASS, we are first required to input the goal performance parameters of the desired vented enclosure (see **Figure 1**). In addition, LoVE BASS allows the user to specify the estimated leakage quality factor Q_L , as well as setting some driver restrictions, such as the maximum allowed driver size and the minimum EBP value. LoVE BASS comes with a default speaker dataset that is read from an Excel file. Nevertheless, this can be easily customized by the end user by simply choosing another Excel file including their own driver models.

When the algorithm is running, it starts seeking for those drivers within the dataset that allow a design that fulfills the target parameters. The way it proceeds is based on the equivalent circuit of vented enclosures. For the sake of simplicity, Q_L includes the effect of all box losses (not only due to leakage, which is the dominant cause of the total loss factor, but also due to port and damping material). After taking a driver from the dataset, a sweep for a wide range of values for V_B and f_B is carried out. For each tuning, the SPL curves corresponding to the cone, the port, and the joint radiation are computed at the maximal rating values of the driver (i.e., without exceeding either the program power, to avoid physical damage, or the maximum linear displacement X_{max} , to avoid distortion over 10%). From the frequency response corresponding to total radiation, the lower cut-off frequency f_3 , the ripple, and the SPL are compared to the target enclosure parameters. In case that all of them are simultaneously satisfied for at least one tuning, the driver is then added to the selection of possible drivers. Otherwise, it is discarded.

This procedure is iteratively repeated for all drivers from the dataset. After the loop is finished, a complete table listing all suitable drivers (if any) is displayed, including Thiele-Small (T-S) parameters, f_3 , V_B , SPL, f_B , and recommended port dimensions, among others. Upon selecting a subset of those speakers, the SPL and cone displacement curves can be represented. Moreover, in order to facilitate the engineer’s choice, four different solutions are suggested, aiming at maximum SPL, minimum f_3 , minimum V_B , and minimum port size, respectively.

Let us illustrate this approach with an example, considering the input values given in Figure 1 and the speaker dataset

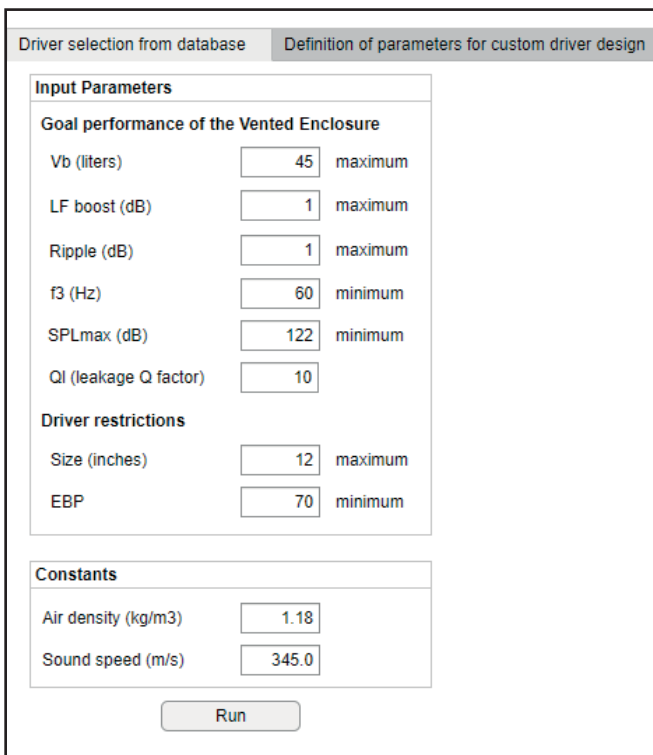


Figure 1: Input parameters for driver selection from database

from the 2019 catalog of Beyma, including 81 low-frequency drivers (courtesy of Acustica Beyma). After running the approach, the following suitable drivers are selected: the 112LW30N8, the 112MC508, the 112MCS508, and the 112SMN8. Moreover, depending on the specific driver choice, box volume, f_B , and applied power, different solutions are displayed for maximal SPL (124.5 dB SPL), minimal f_3 (55 Hz), minimal volume (35 ltr) and minimum port size, as shown in **Figure 2**.

Definition of Parameters for Custom Driver Design

The approach for custom driver design can be carried out by opening the corresponding tab from the main window (see **Figure 3**). Besides V_B , f_3 and SPL_{max} , the electrical resistance R_E and the driver size are also requested. With

this procedure, instead of the ripple, the alignment is to be chosen between B4, QB3, and C4. If QB3 is selected, the B parameter is also required. On the other hand, if C4 is chosen, the ripple of the frequency response (R, measured in decibels) should be specified. The configuration for the different alignments is shown in **Figure 4**.

For a specific alignment, the linear parameters of the transducer are unique and can be computed from a closed-form solution (see the block diagram shown in **Figure 5**). The first step is to derive the coefficients that satisfy the transfer function for the desired alignment. From them and the estimation of the leakage quality factor Q_L , the well-known normalized linear coefficients a , q , and h can be obtained. Subsequently, the driver's required linear parameters (i.e., f_s , Q_{TS} , Q_{ES} , V_{AS} , and h_0) can be derived. We should

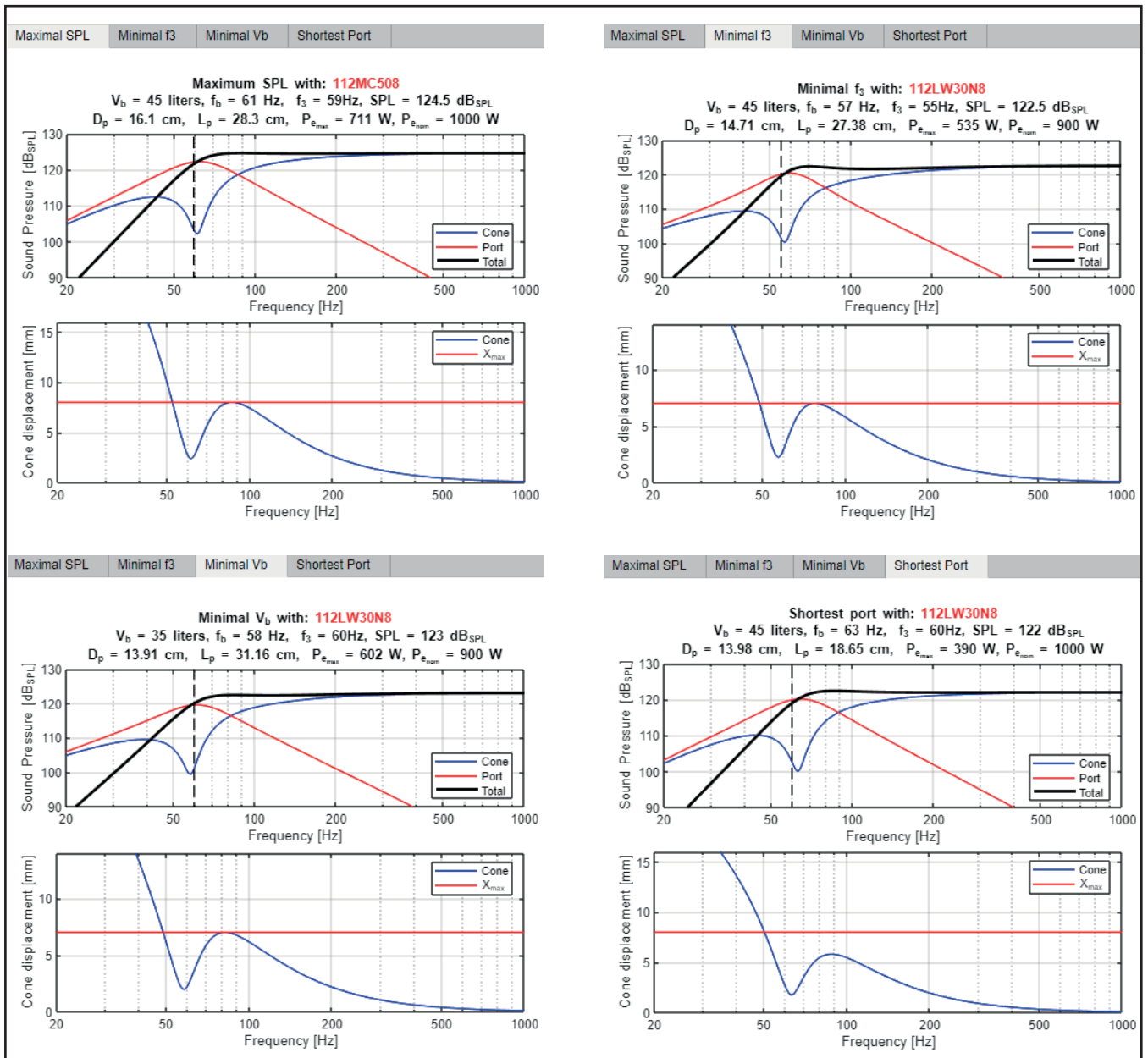


Figure 2: Here are four different solutions that meet the requirements given in Figure 1: maximal SPL (top left); minimal f_3 (top right); minimal volume (bottom left); and minimal port size (bottom right)

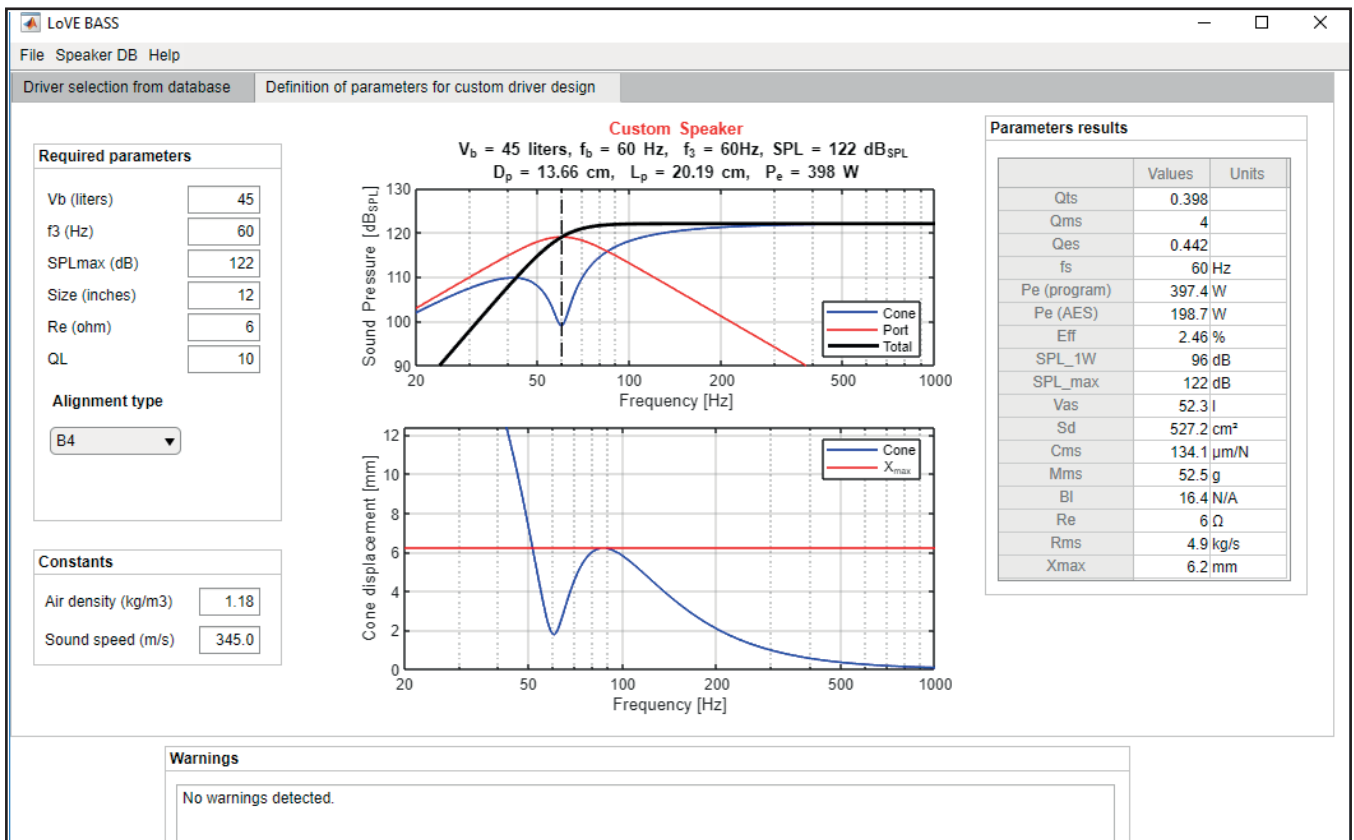


Figure 3: Layout for the custom driver design

mention that, in order to obtain Q_{ES} , we should previously set Q_{MS} to some arbitrary value (in this application $Q_{MS} = 4$ is considered). At this point, the speaker size allows us to estimate the effective diameter and hence, S_D . With respect to R_E , this will only affect the Bl value (the larger the R_E , the larger the Bl value). On another hand, the required power rating of the driver can be computed from the maximum achievable SPL and the driver's efficiency. Moreover, the Helmholtz resonant frequency is obtained from h and f_s . With all these parameters, the cone displacement curve at maximal input power can be derived and, subsequently, the linear cone displacement X_{max} . After the driver properties are determined, the SPL and cone displacement curves are shown, as well as a table with all driver parameters (see Figure 3).

LoVe BASS allows for a final check to alert for the feasibility of driver manufacturing. Up to four warnings may appear due to some of the following reasons: too low moving mass, too high Bl factor, excessively large X_{max} , and/or too high P_e . Moreover, a number of possible solutions are suggested to overcome these problems (see Figure 6).

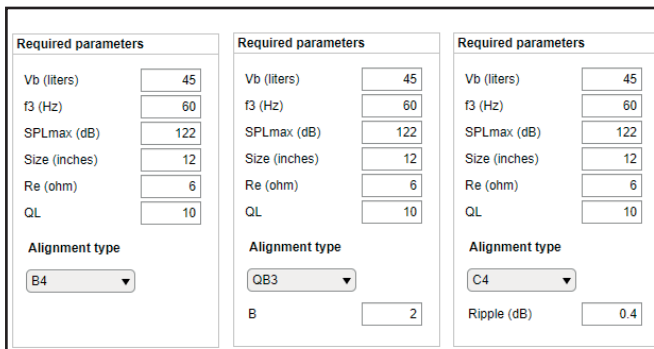


Figure 4: Alignment configuration

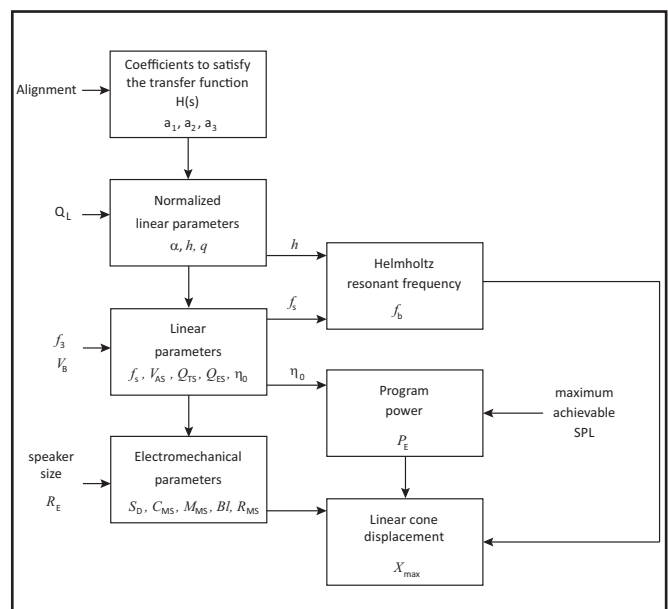


Figure 5: Block diagram of the algorithm for the custom driver design

Warnings

The following warnings are detected: check for feasibility:

- Low moving mass. This could provoke excessive resonant modes in the diaphragm, unless light but rigid materials are used.

In order to overshoot these problems the following actions could be taken:

- Solution 1: increase speaker size
- Solution 2: decrease box volume, V_b
- Solution 4: decrease lower cutoff frequency, f_3

Warnings

The following warnings are detected: check for feasibility:

- High BI value.

In order to overshoot these problems the following actions could be taken:

- Solution 1: decrease R_e
- Solution 2: decrease speaker size
- Solution 3: Increase box volume, V_b
- Solution 4: Increase lower cutoff frequency, f_3

Warnings

The following warnings are detected: check for feasibility:

- High linear excursion, X_{max} . This could cause audible distortion.

In order to overshoot these problems the following actions could be taken:

- Solution 1: increase speaker size
- Solution 2: decrease the maximum achievable SPL, SPL_{max}
- Solution 3: increase lower cutoff frequency, f_3

Warnings

The following warnings are detected: check for feasibility:

- High electrical input power.

In order to overshoot these problems the following actions could be taken:

- Solution 1: decrease the maximum achievable SPL, SPL_{max}
- Solution 2: increase box volume, V_b
- Solution 3: increase lower cutoff frequency, f_3

Figure 6: LoVE Bass warning messages

Conclusion

Choosing an appropriate transducer is a crucial step for enclosure designs, and LoVE BASS is a useful tool to guide driver selection for vented boxes. Using this approach provides the following benefits: 1) It allows users to reach a design that fulfills the target box parameters; 2) A large amount of engineering hours can be saved, so that the electroacoustic engineer can focus on other design aspects; 3) The manufacturing cost of the box can be adjust by selecting the most inexpensive transducer among those that satisfy the technical requirements; and 4) Unfeasible designs are identified in case that too demanding target parameters are input.

For more information about LoVE Bass, contact Francisco (Paco) Castells at fcastells@eln.upv.es. **VC**

About the Authors

Francisco Castells is lecturer on Electroacoustics with the Master in Acoustic Engineering program, Universitat Politècnica de València.

José Manuel Requena is a postgraduate student in the Master of Acoustic Engineering program at Universitat Politècnica de Valencia.

Solen Fast Capacitors™ & Solen Perfect Layer Inductors, often imitated, sometimes copied - even counterfeited - yet never equaled.



SOLEN CAPACITORS

Metallized Polypropylene Film Fast Capacitors™

- First to use the "Fast Capacitors"™
- First to use bi-axially oriented metallized polypropylene film
- Lowest dissipation factor, lowest dielectric absorption
- Widest range of values, from 0.01uf to 330uf
- Widest range of voltages, from 250Vdc to 630Vdc

Metallized Teflon™ Film - 0.22uf to 10uf, 1300Vdc

Silver Metallized Polypropylene Film - 0.10uf to 56uf, 700Vdc

Teflon™ Film & Foil - 0.033uf to 0.82uf, 1000Vdc

Polypropylene Film & Tin Foil - 0.01uf to 8.2uf, 100Vdc to 1200Vdc

Metallized Polypropylene Can Type - 22uf, 33uf, 51uf & 100uf, 630Vdc

Metallized Polyester Film - 1.0uf to 47uf, 160Vdc

Non-Polar Electrolytic .5% DF - 10uf to 330uf, 100Vdc

Polarized Electrolytic - .33uf to 3300uf, 63Vdc to 450Vdc

SOLEN INDUCTORS

Perfect Layer Hexagonal Winding Air Core

- First to use Perfect Layer Hexagonal winding technique
- First to use Hepta-Litz seven strand insulated wire
- First to use H49-Litz forty-nine strand insulated wire
- Zero distortion air core, lowest dc resistance
- Widest range of values 0.05mH to 85mH
- Wide range of wire diameters, from 0.8mm (20awg) to 3.1mm (8awg)

SOLEN RESISTORS

Wire wound 10w 5% - 0.5 ohm to 82 ohm

Metal Oxide Link 10w 5% non inductive - 1 ohm to 47 ohm

AchrOhmic 16w 2% MIL Spec non inductive - 0.5 ohm to 82 ohm

SOLEN TUBES

- Electro Harmonix -Genalex Gold Lion
- Mullard -Sovtek -Tesla JJ -Tung-Sol

MULTIPLE BRANDS OF LOUDSPEAKER DRIVER UNITS
ALL THE ACCESSORIES YOU NEED

Contact us

3940 Wilfrid Laurier Blvd.,
St-Hubert, QC, J3Y 6T1, Canada

Tel: 450.656.2759

Fax: 450.443.4949

Email: solen@solen.ca

Web: www.solen.ca

